



# Re-Opening America



*World Class Cleaning & Hygiene Solutions*



National Chemical Laboratories, Inc.

**PROPER  
DISINFECTANT  
APPLICATION  
PROCEDURES**

# **CHOOSING THE APPROPRIATE DISINFECTANT**



# Disinfectants Come in 4 Main Forms



**Ready-To-Use**

**Dilution  
Control**

**Concentrates**

**Wipes**

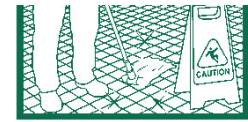
**Kill claims will vary depending upon individual product. Please refer to each product's label and Efficacy Data Sheet to verify specific virus, bacteria, fungi, or mildewsat kill claims.**

# Read Label Instructions

ginosa  
cococcus  
ted  
rmidis,  
lyticus,  
ycin  
  
% soil on  
ronavirus  
rus,  
nia Virus.  
m hard  
i Virus  
, Swine  
  
aces:  
  
soil on  
  
hard, non-  
  
ngs,  
er and  
contact  
  
eas.  
op,



**World Class Cleaning Solutions®**



**Disinfectant**

## Neutral Q™ Disinfectant Cleaner Deodorant

Disinfectant, Deodorizer, Fungicide, Mildewstat, Virucide\*

For Hospitals, Nursing Homes, Commercial, Institutional and Industrial Sites. Effective in hard water up to 400 ppm hardness calculated as Ca CO<sub>3</sub> in the presence of 5% soil. Meets OSHA Bloodborne Pathogen Standard for HIV, HBV and HCV.

**ACTIVE INGREDIENTS:**

Didecyl Dimethyl Ammonium Chloride.....2.54%  
Alkyl (50% C14, 40% C12, 10% C16)

Dimethyl Benzyl Ammonium Chloride.....1.69%

**OTHER INGREDIENTS:**.....95.77%

**TOTAL:** .....100.00%

**EPA REG. NO. 10324-154-2296 EPA EST. NO. 2296-PA-1**

**KEEP OUT OF REACH OF CHILDREN  
DANGER PELIGRO**

See side panel of label for additional precautionary statements.

**NET CONTENTS: 1 GALLON / 3.79 LITERS**

**FIRST AID**

In case of emergency, call a poison control center or doctor for treatment advice. Have the product container or label with you when calling a poison control center or doctor, or going for treatment.

**IF IN EYES:** Hold eye open and rinse slowly and gently with water for 15-20 minutes. Remove contact lenses, if present, after the first 5 minutes, then continue rinsing eye.

**IF ON SKIN:** Take off contaminated clothing. Rinse skin immediately with plenty of water for 15-20 minutes.

**IF INHALED:** Move person to fresh air. If person is not breathing, call 911 or an ambulance, then give artificial respiration, preferably mouth-to-mouth, if possible.

**IF SWALLOWED:** Have person sip a glass of water if able to swallow. Do not induce vomiting unless told to do so by a poison control center or doctor. Do not give anything by mouth to an unconscious person. Call a poison control center or doctor immediately for treatment advice.

porous sur  
**ANIMAL PI**  
and enclos  
of facilities  
clean surfa  
**FOR USE A**  
effectivene  
**FOR USE A**  
effectivene  
Apply use :  
spray 6-8 i  
animals, as  
wet for 10  
been absor  
equipment  
**TO CONTR**  
use solutio  
every seve  
**GENERAL**

**DANGER. (**  
skin. Do nc  
protective  
tobacco or

This produ

Do not con  
**PESTICIDE**  
or persons  
**PESTICIDE**

# Read Label Instructions

Influenza A Virus (H1N1), Transmissible Gastroenteritis Virus (TGE).

This product kills the following viruses in 10 minutes at 9 oz. per gal. of 400 ppm hard water and 5% soil on hard, non-porous surfaces:

Canine Parvovirus\*\*, Rabies Virus\*\*.

\*\* Indicates that a dilution of 9 oz. per gal. of water is required for this claim.

**FUNGICIDAL PERFORMANCE:** This product kills the following fungi in 10 minutes at 2 oz. per gal. of 400 ppm hard water and 5% soil on hard, non-porous surfaces: Candida albicans, Trichophyton mentagrophytes (Athlete's foot fungus) (a cause of Ringworm).

**MILDEWSTATIC PERFORMANCE:** This product controls the following mold at 2 oz. per gal. of 400 ppm hard water and 5% soil on hard, non-porous surfaces for up to 7 days: Aspergillus niger

This product is for use on hard, non-porous surfaces in hospitals, healthcare facilities, nursing homes, businesses and office buildings, restrooms, institutions, schools, colleges, commercial and industrial sites. This product is a one-step germicidal disinfectant, cleaner and deodorant designed for general cleaning, disinfecting, deodorizing and controlling mold and mildew on hard, non-porous non-food contact surfaces. Kills Pandemic 2009 H1N1 Influenza A Virus.

## DIRECTIONS FOR USE

**It is a violation of Federal law to use this product in a manner inconsistent with its labeling.**

Rinse hard, non-porous food contact surfaces with potable water after application of product.

This product is not for use on medical device surfaces.

**FOR USE AS A GENERAL, HOSPITAL, MEDICAL DISINFECTANT, FUNGICIDE, VIRUCIDE\*, CLEANER:** 1. Pre-clean heavily soiled areas. 2. Apply use solution of 2 oz. of this product per gal. of water to disinfect hard, non-porous surfaces with a sponge, brush, cloth, mop, mechanical spray device. For spray applications, spray 6-8 inches from surface. Do not breathe spray. 3. Treated surfaces must remain wet for 10 minutes. 4. Wipe dry with a clean cloth or allow to air dry. Rinsing of floors is not necessary unless they are to be waxed or polished. 5. Prepare a fresh solution daily or when visibly dirty.

**\*KILLS HIV, HBV AND HCV ON PRE-CLEANED HARD, NON-POROUS SURFACES/OBJECTS PREVIOUSLY SOILED WITH BLOOD/BODY FLUIDS** in health care settings or other settings in which there is an expected likelihood of soiling of hard, non-porous surfaces/objects with blood or body fluids and in which the surfaces/objects likely to be soiled with blood or body fluids can be associated with the potential for transmission of Human Immunodeficiency Virus Type 1 (HIV-1) (associated with AIDS), Hepatitis B Virus (HBV) and Hepatitis C Virus (HCV).

Disinfectant, Deodorant  
For Hospitals, Nursing Homes  
presence of 5% soil

### ACTIVE INGREDIENTS

Didecyl Dimethyl Ammonium Chloride  
Alkyl (50% C14, 40% C12, 10% C10)  
Dimethyl Benzyl Ammonium Chloride

### OTHER INGREDIENTS

TOTAL: .....

EPA REG. NO. 103

**KEEP OUT OF REACH OF CHILDREN  
DANGER**

See side panel of container for  
NET CONTENTS

**National Chemical Corporation**  
401 N. 10th Street



# Advantages of Using Disinfectants Through Dilution Control Systems



# Advantages of Using Ready-To-Use Disinfectants





# **IMPLEMENTING A PLAN**

# Work Around Each Room in a Clockwise or Counter-Clockwise Motion

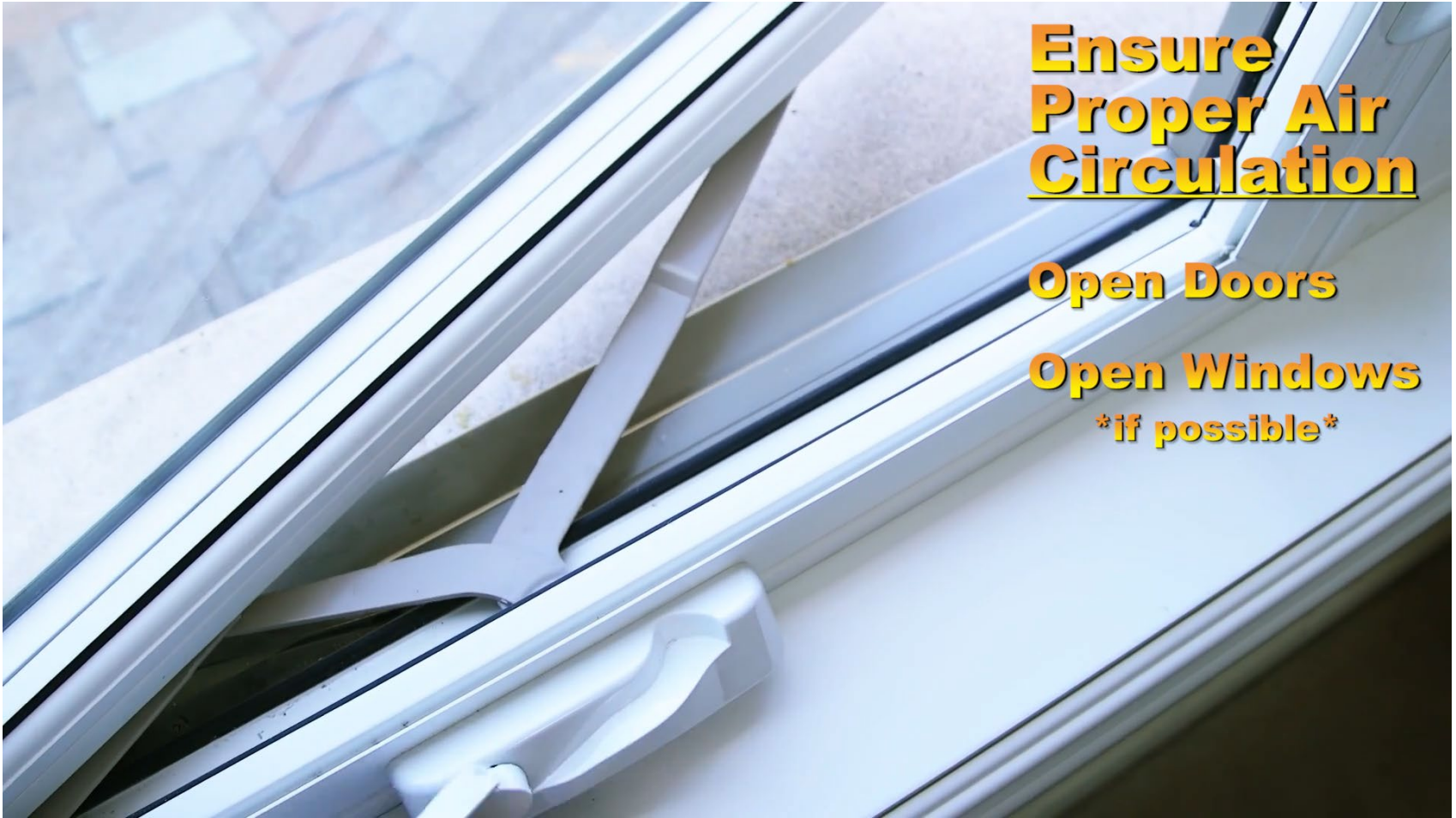


# Pre-Clean Soiled Surfaces Prior to Disinfection





# Ensure Proper Air Circulation



**Ensure  
Proper Air  
Circulation**

**Open Doors**

**Open Windows**

**\*if possible\***

# **USAGE INSTRUCTIONS**

These are general instructions for disinfecting. Before use please consult with the label of the specific product you are using, along with the Technical Data Sheet and Safety Data Sheet (SDS).

These forms for all NCL disinfectants are available for download at [www.nclonline.com](http://www.nclonline.com) and from the NCL Tools mobile app.



Disinfectants are effective on hard, non-porous surfaces only. Not on soft surfaces or the air.

# Hard Non-Porous Surfaces

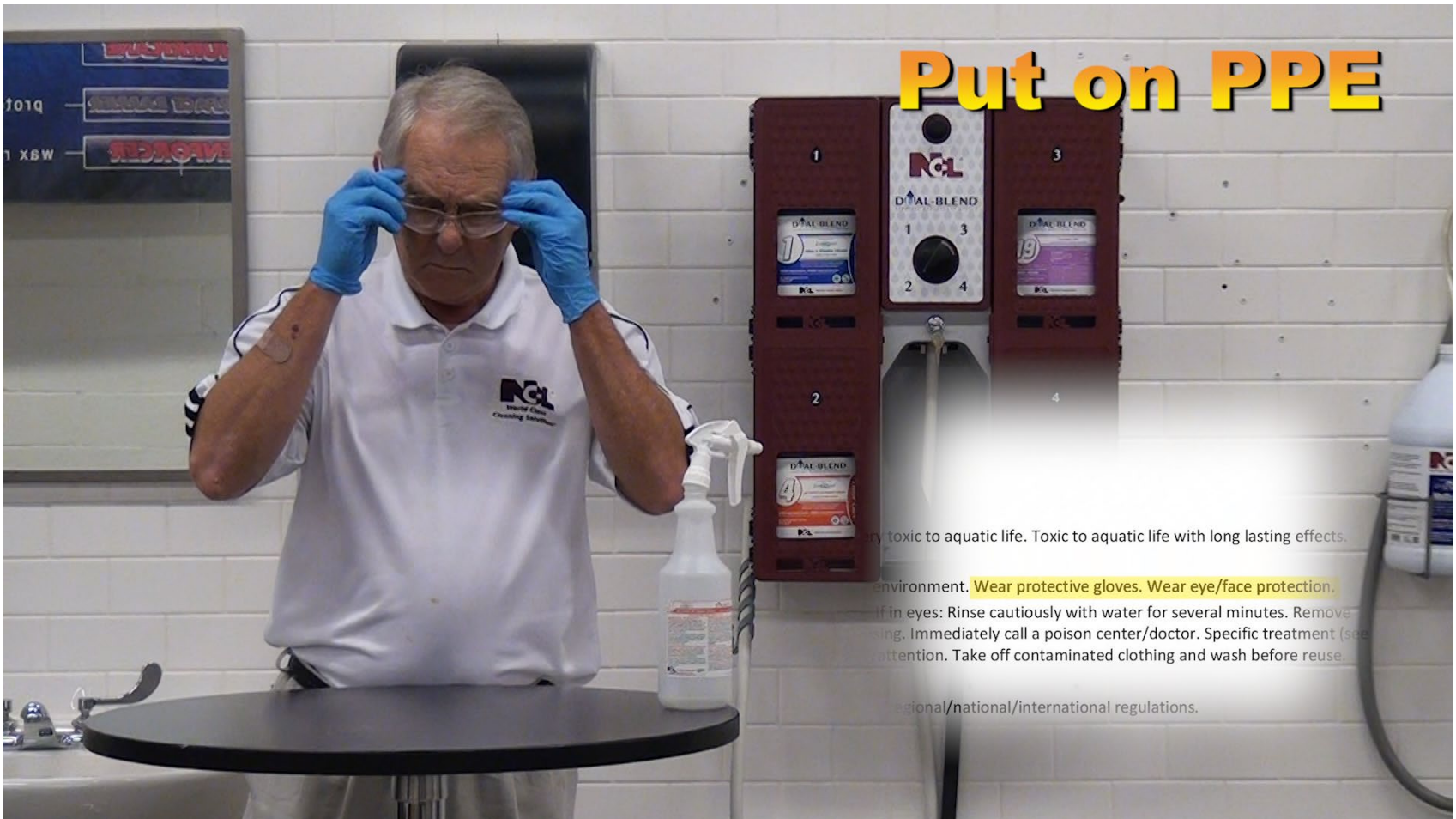


**X** soft surfaces

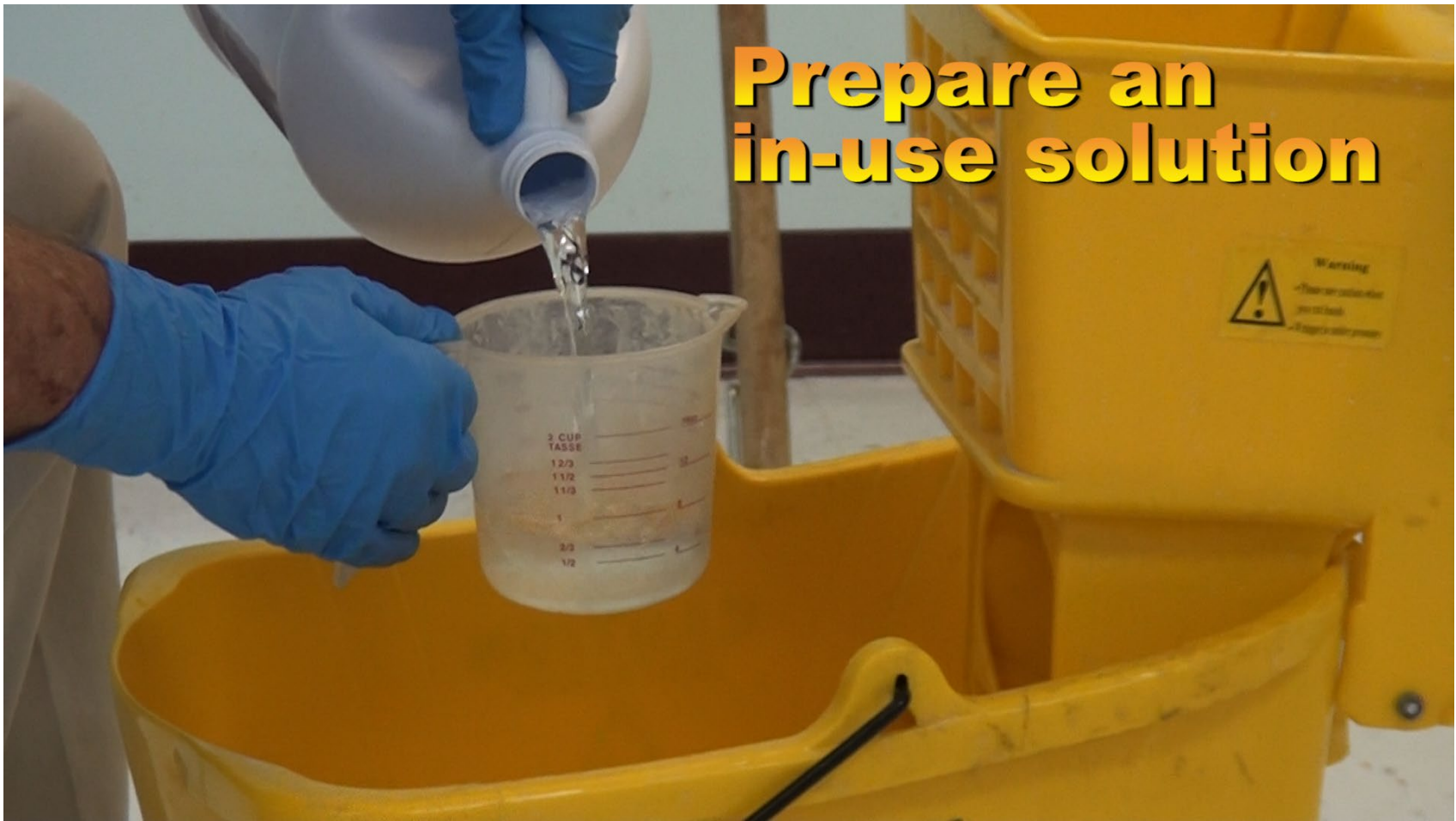
**X** air

# Put on all PPE

(gloves, eye or face protection, gowns, etc.)



# Prepare In-Use Solution if using a bulk concentrated disinfectant



**Prepare an  
in-use solution**



# Prepare In-Use Solution if using a bulk concentrated disinfectant

Influenza A Virus (H1N1), Transmissible Gastroenteritis Virus (TGE).

This product kills the following viruses in 10 minutes at 9 oz. per gal. of 400 ppm hard water and 5% soil on hard, non-porous surfaces:

Canine Parvovirus\*\*, Rabies Virus\*\*.

\*\* Indicates that a dilution of 9 oz. per gal. of water is required for this claim.

**FUNGICIDAL PERFORMANCE:** This product kills the following fungi in 10 minutes at 2 oz. per gal. of 400 ppm hard water and 5% soil on hard, non-porous surfaces: Candida albicans, Trichophyton mentagrophytes (Athlete's foot), Trichophyton tonsurans (ringworm).

**MILDEWSTATIC PERFORMANCE:** This product controls the following mold at 2 oz. per gal. of 400 ppm hard water and 5% soil on hard, non-porous surfaces for up to 7 days: Aspergillus niger

This product is for use on hard, non-porous surfaces in hospitals, healthcare facilities, nursing homes, businesses and office buildings, restrooms, institutions, schools, colleges, commercial and industrial sites. This product is a one-step germicidal disinfectant, cleaner and deodorant designed for general cleaning, disinfecting, deodorizing and controlling mold and mildew on hard, non-porous non-food contact surfaces. Kills Pandemic 2009 H1N1 Influenza A Virus.

## DIRECTIONS FOR USE

**It is a violation of Federal law to use this product in a manner inconsistent with its labeling.**

Rinse hard, non-porous food contact surfaces with potable water after application of product.

This product is not for use on medical device surfaces.

**FOR USE AS A GENERAL, HOSPITAL, MEDICAL DISINFECTANT, FUNGICIDE, VIRUCIDE\*, CLEANER:** 1. Pre-clean heavily soiled areas. 2. Apply use solution of 2 oz. of this product per gal. of water to disinfect hard, non-porous surfaces with a sponge, brush, cloth, mop, mechanical spray device. For spray applications, spray 6-8 inches from surface. Do not breathe spray. 3. Treated surfaces must remain wet for 10 minutes. 4. Wipe dry with a clean cloth or allow to air dry. Rinsing of floors is not necessary unless they are to be waxed or polished. 5. Prepare a fresh solution daily or when visibly dirty.

**\*KILLS HIV, HBV AND HCV ON PRE-CLEANED HARD, NON-POROUS SURFACES/OBJECTS PREVIOUSLY SOILED WITH BLOOD/BODY FLUIDS** in health care settings or other settings in which there is an expected likelihood of soiling of hard, non-porous surfaces/objects with blood or body fluids and in which the surfaces/objects likely to be soiled with blood or body fluids can be associated with the potential for transmission of Human Immunodeficiency Virus Type 1 (HIV-1) (associated with AIDS), Hepatitis B Virus (HBV) and Hepatitis C Virus (HCV).

# Prepare an in-use solution

Disinfectant, Deodorant  
For Hospitals, Nursing Homes,  
presence of 5% soil

**ACTIVE INGREDIENTS:**

(1) 4-Chlorophenyl methyl  
Alkyl (C14, 4

Dimethyl Benzyl

**OTHER INGREDIENTS:**

**TOTAL:** .....

**EPA REG. NO. 103**

**KEEP OUT OF REACH OF CHILDREN  
DANGER**

See side panel of container for  
**NET CONTENTS**

**National Chemical  
401 N. 10th Street**

Follow dispenser instructions if using a disinfectant from a dilution control system





If mopping disinfectant on to a floor, follow standard mopping procedures





When applying disinfectant to a surface via a spray bottle, spray into a cleaning cloth

**Apply disinfectant via trigger spray bottle into a cleaning cloth or directly on to the surface**

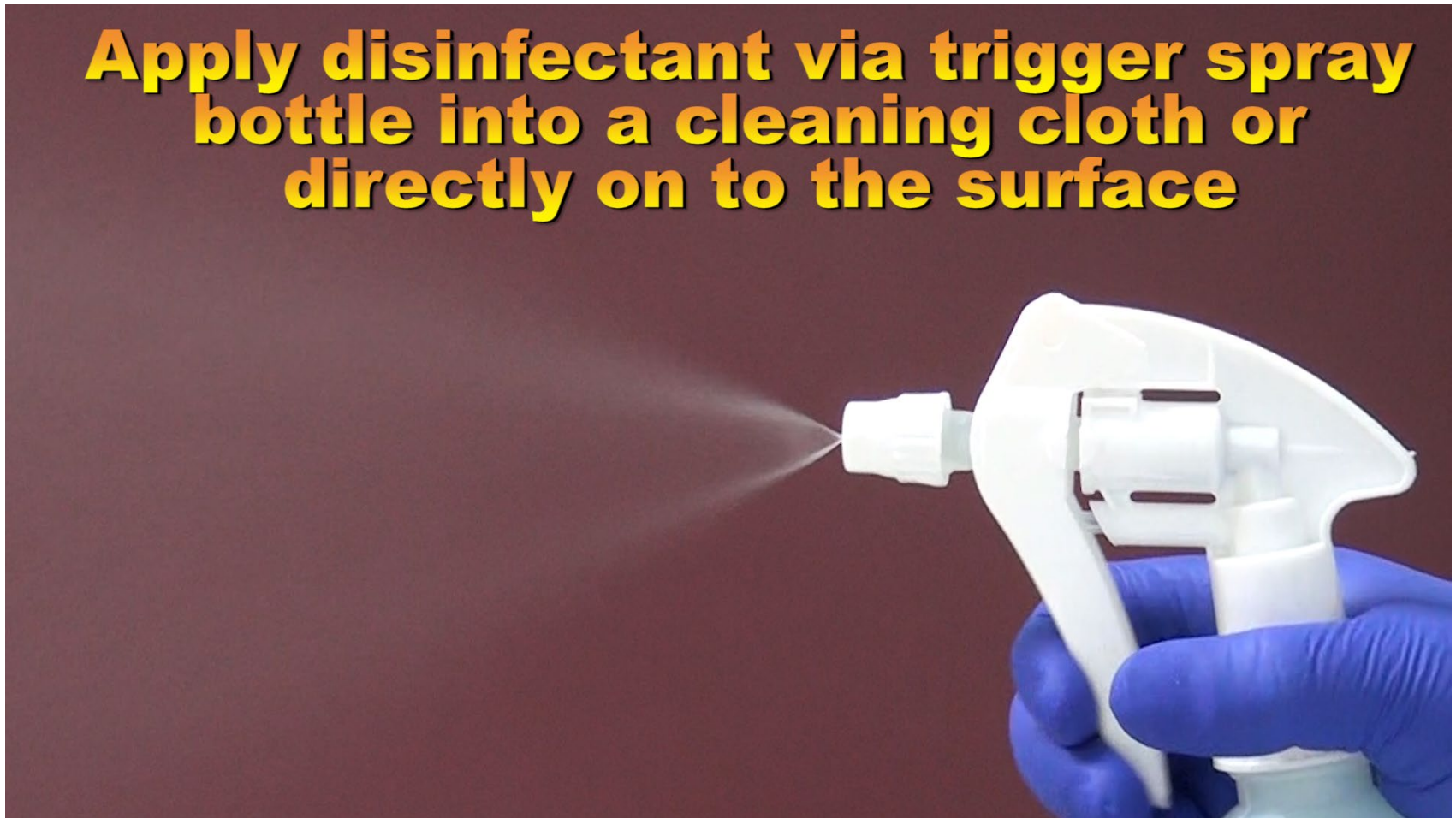


Or directly on to the surface



**DO NOT** lean toward or inhale  
chemical while spraying

**Apply disinfectant via trigger spray  
bottle into a cleaning cloth or  
directly on to the surface**





# Disinfect with Pre-Moistened RTU Wipes



**Disinfecting with RTU wipes**

**Pre-Saturated**

**Ultra Stong**

# 4 Main Application Methods

**Damp Mopping**



**RTU Wipes**



**Trigger Spray**



**Pump Sprayer**





A limited number of disinfectants may be applied via an Electrostatic Sprayer



**Electrostatic Sprayer**



Check the disinfectant label to determine if it can be used via an Electrostatic Sprayer



**Electrostatic Sprayer**

Applying disinfectant via a fogging machine is **NOT** recommended



Follow the label instructions for  
required dwell time periods

**Follow contact  
time procedures**

A dark, circular table with a textured surface, possibly a laboratory or industrial table, is shown from a high-angle perspective. The table is the central focus of the image. In the upper right quadrant of the image, the text "Follow contact time procedures" is written in a bold, yellow, sans-serif font with a black outline. The background is a plain, light-colored wall.



If the surface dries prior to the expiration of the dwell period, re-apply the disinfectant

**Re-apply if  
necessary**



For the safety of workers and others in the facility, restrict access to areas which are being disinfected



If disinfecting a food contact surface, rinse surface with water after dwell period has expired





# **ENDING PROCEDURES**

Store away chemicals, equipment, and PPE safely and securely



Lastly, WASH YOUR HANDS!





For more information regarding proper disinfecting procedures as we Re-Open America, please contact NCL Technical Support at 1-800-NAT-CHEM

